



FLEX WING LINEAR TRACK

LED Fixture • 3-Wire (H) Halo Compatible

FRESH TRACK SERIES

SPECIFICATIONS

- CRI: > 87
- Power Factor: > 0.95
- Input Voltage: 110-277 VAC, 50/60Hz
- Housing: black or white
- Sizes: 2ft, 4ft*, 5ft* (*upon request)
- Adjustable Twin Wings: Adjust independently or together up to 30° for precise shelf lighting.
- Asymmetric + Panel Optical Design: Provides superior brightness and clarity for aisles.
- Ultra-Slim, Modern Design: An elegant yet powerful solution for retail lighting.
- 3 Selectable Power Modes: DIP switch allows easy adjustment to 35W, 40W, 45W, 50W.
- Colors: Platinum (PL), Premium White+ (PW+), 3500K (35)



FIXED CENTER LIGHT WITH ADJUSTABLE OUTER WINGS

Twin outer wings can be adjusted individually or simultaneously through 30°.

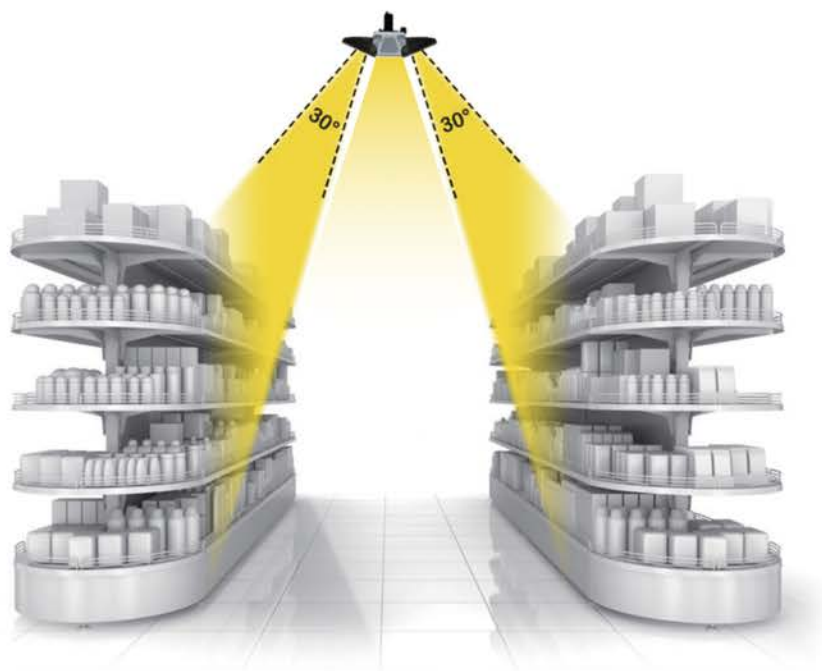


TECHNICAL DATA SPECS Available Color Formulas: Platinum (PL), Premium White+ (PW+), 3500K (35)

SIZE	MODEL #	COLORS	WATTS	TYPE	LENGTH (mm) (Nominal)	LENGTH (in) (Nominal)	LUMENS	LUMENS PER WATT
2 ft	TR-S3-1560-XXSW	PL, PW+, 35	50	Aisle	600	24	2790	155
4 ft	TR-S3-1560-XXSW	PL, PW+, 35	60	Aisle	1500	60	10,800	180

Specifications subject to color/kelvin chosen. Specifications subject to change without notice; contact us for more information.

Adjustable Twin Wings



Dimensions

L (mm)	H (mm)	W (mm)
600	68	120
1500		

INSTALLATION

01 Confirm Existing Track Compatibility

Ensure the installed track rail is 3-wire (single-phase) or 4-wire (3-phase) and compatible with standard North American or European systems.

02 Adjust & Configure

Set the desired wattage via the integrated DIP switch and position the fixture for optimal lighting performance.



03 Install Linear Luminaire

Insert the Flex Wing linear track light into the existing track using the tool-less, adjustable mounting adaptor. Click securely into place.

Additional Notes

- Designed for easy retrofit into existing track systems
- Integrates seamlessly with track spotlights for a complete lighting solution
- Recommended installation height: 3–5 m

