



SLIMLINE BAR LED

Works with 24V Constant Voltage LED Driver (sold separately)



The most universal, high IP, compact, long life and high efficiency LED from Promolux. Using high quality heat sinks for exceptional thermal management, the Promolux Slimline Bar comes in various lengths and can be connected in a series up to 150 Watts.

Easy Installation: Enjoy a hassle-free installation process with magnets or angular mounting brackets.

Adjustable Beam Angles: Using the clip-on mounting brackets, each bar can be adjusted from 0° to 60° beam angle, providing flexibility for optimal display.

Easily convert your refrigerated display case from **Hillphoenix, Hussmann, Kysor Warren** (and other OEM) LEDs to Promolux Slimline Bar LEDs. See *second page for our specialty OEM cords. Contact for more details.*

Specifications

- Connectable in a Series up to 150W
- IP65
- 226° Beam Angle
- CRI: > 80
- High R9 & R12 Values
- Power Factor: > 0.9
- Voltage Input: 24V
- Chips: 2835
- Color: Signature Balanced Spectrum Platinum

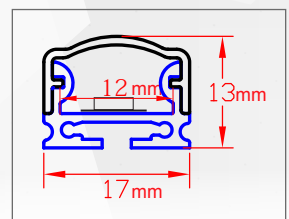
Ideal for:

Service & Multi-Deck:
Meat
Seafood
Dairy
Deli & Prepared Foods
Floral
Produce
Bakery
Salad Bars
Ice Cream/Gelato



Easy Connection to Promolux LED Driver (sold separately)

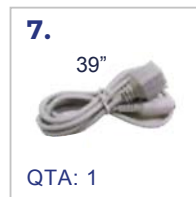
DC 5mm female to DC 5mm male



Accessories

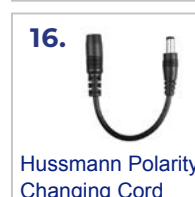
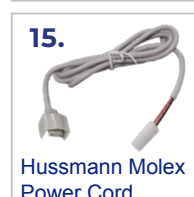
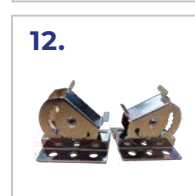
Included

1. Mounting Screws
2. 0° Mounting Clip
3. 30° Mounting Clip
4. 45° Mounting Clip
5. 60° Mounting Clip
6. Mounting Magnets
7. Power Cord



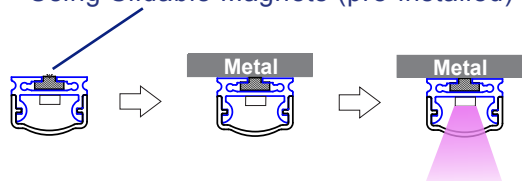
Optional Purchase

8. Connector Cord / Jumper
9. M to F DC 5mm Power Splitter
10. M to F 39" DC 5mm Extnsn Cord
11. M to F 8" DC 5mm Extnsn Cord
12. Rotatable Metal Clips (2-Pack)
13. SB-Power-6

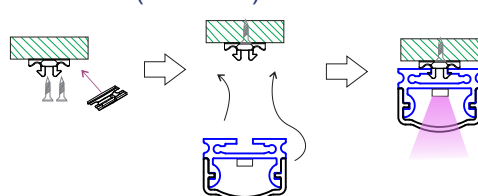


How to install:

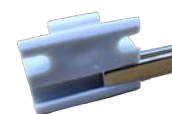
Using Slidable Magnets (pre-installed)



Using Mounting Clips (multiple angles) & Screws (included)

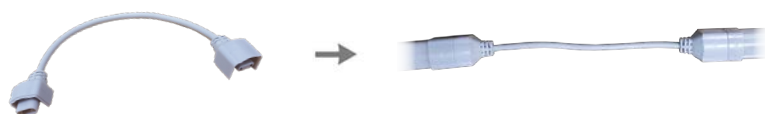


Using Mounting Clips (multiple angles) with Magnets (included)

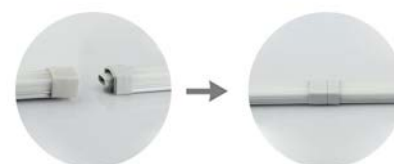


Two ways to connect:

SB-CONNECT Connector / Jumper Cable (optional purchase)



LED to LED



Size	Model Number	Watts	Type	Length (mm) (Nominal)	Length (in) (Nominal)	Lumens	Lumens per Watt	Color
1ft	SB-PL-10C	3.8	Full Brightness (Canopy)	254	10	320	84	Platinum
2ft	SB-PL-22C	10.6	Full Brightness (Canopy)	549	22	950	90	Platinum
3ft	SB-PL-34C	12	Full Brightness (Canopy)	849	34	1050	88	Platinum
4ft	SB-PL-46C	14	Full Brightness (Canopy)	1149	46	1240	89	Platinum
5ft	SB-PL-58C	22	Full Brightness (Canopy)	1449	58	1810	82	Platinum
3ft	SB-PL-34S	5.8	60% Brightness (Shelf)	849	34	530	91	Platinum
4ft	SB-PL-46S	6.8	60% Brightness (Shelf)	1149	46	660	97	Platinum
5ft	SB-PL-58S	11	60% Brightness (Shelf)	1449	58	940	85	Platinum

Specifications subject to change without notice. Contact us for more information.